

Directions: Answer the following question(s).

1 What is an adaptation humans have made as a result of the ozone layer depletion?

- A. The banning of Chlorofluorocarbons (CFC's)
- B. The creation of Chlorofluorocarbons (CFC's)
- C. The banning of Chlorine (Cl)
- D. The creation of Chlorine (Cl)

Master ID: 1953607 Revision: 1
Correct: A
Standards:
SOC.6.6 - G5.2.1

2 Which of the following is a change that nations need to make in order to create more energy?

- A. Countries are dependent on all resources.
- B. Create renewable resources to be dependent.
- C. Create non-renewable sources to be interdependent.
- D. Use renewable energy resources to be interdependent.

Master ID: 1953864 Revision: 2
Correct: D
Standards:
SOC.6.6 - G1.3.3

3 Which of the following statements is **true** of our natural resources and the products humans make from them?

- A. People do not use enough of the world's resources.
- B. It takes many natural resources to make most products.
- C. It takes very few resources to make most products.
- D. People consume less than half of the Earth's materials.

Master ID: 1953857 Revision: 1
Correct: B
Standards:
SOC.6.6 - E3.1.2

Directions: Answer the following question(s).

- 4 Which of the following natural resources have been controlled during political conflicts?
Select **all three** that are correct.

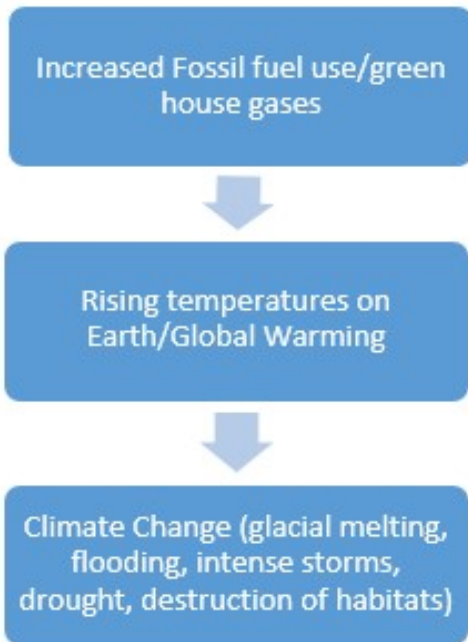
- A. water sources
- B. oil
- C. religion
- D. minerals

Master ID: 1953854 Revision: 4
Correct: ABD
Standards:
SOC.6.6 - C4.3.1

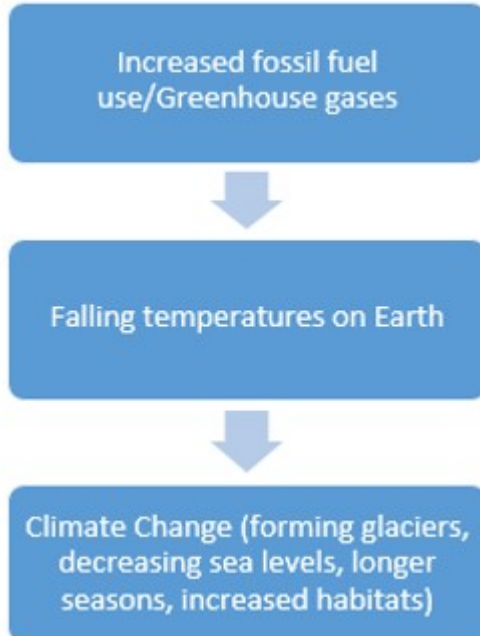
Directions: Answer the following question(s).

- 5 Which of the following flow charts **best** explains the disadvantages of using fossil fuels and Global Warming?

A.



B.



Directions: Answer the following question(s).

Master ID: 1953849 Revision: 4
Correct: A
Standards:
SOC.6.6 - C4.3.2

6 Which consequence will occur as a result of Global Warming?

- A. depletion of oceans
- B. ozone depletion
- C. depletion of coal
- D. depletion of habitats

Master ID: 1953673 Revision: 3
Correct: B
Standards:
SOC.6.6 - G3.2.1
SOC.6.6 - G5.1.2

7 Which consequence will occur as a result of Over Fishing?

- A. depletion of oceans
- B. ozone depletion
- C. depletion of coal
- D. depletion of habitats

Master ID: 1953664 Revision: 4
Correct: A
Standards:
SOC.6.6 - G3.2.1
SOC.6.6 - G5.1.2

Directions: Answer the following question(s).

8 Which consequence will occur as a result of Deforestation?

- A. depletion of oceans
- B. ozone depletion
- C. depletion of coal
- D. depletion of habitats

Master ID: 1953663 Revision: 3
Correct: D
Standards:
SOC.6.6 - G3.2.1
SOC.6.6 - G5.1.2

9 Which consequence will result from a Mountain Top Removal?

- A. depletion of oceans
- B. ozone depletion
- C. depletion of coal
- D. depletion of habitats

Master ID: 1953658 Revision: 3
Correct: C
Standards:
SOC.6.6 - G3.2.1
SOC.6.6 - G5.1.2

10 Which of the following is an environmental effect on the atmosphere?

- A. soil erosion
- B. fish dying
- C. ozone depletion
- D. water pollution

Master ID: 1953631 Revision: 1
Correct: C
Standards:
SOC.6.6 - G5.1.1

Directions: Answer the following question(s).

11 Which of the following is the **best** example of countries working together to solve global problems?

- A. World Environment Day
- B. World Farm Animal Day
- C. World Day of Remembrance
- D. World Heritage Day

Master ID: 1953609 Revision: 2
Correct: A
Standards:
SOC.6.6 - C4.3.3

12 What are the environmental factors that lead to conflict among nations?

- A. religion of the nations
- B. uncooperative leaders
- C. movement of people
- D. natural resource availability

Master ID: 1953606 Revision: 1
Correct: D
Standards:
SOC.6.6 - G4.4.1

13 Which of the following **best** describes human environment interaction?

- A. people learning to acquire, analyze, and answer questions
- B. how people adapt to, use, and modify the environment
- C. how people move, locate, and settle
- D. learning to adapt, locate, and answer

Master ID: 1953604 Revision: 4
Correct: B
Standards:
SOC.6.6 - G1.3.1

Directions: Answer the following question(s).

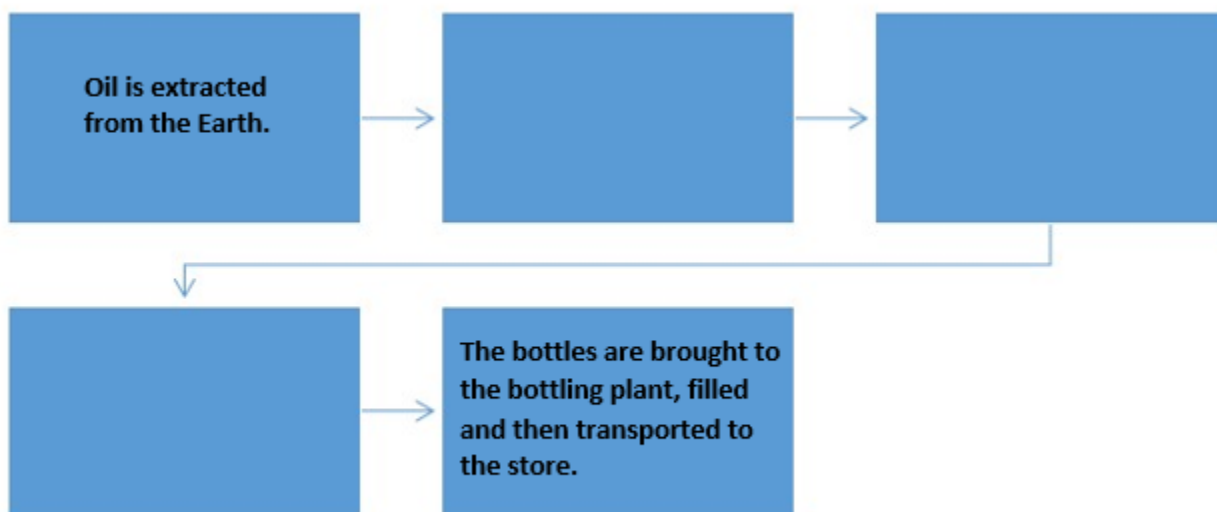
14 Which of the following technologies are helpful to the environment? Choose 2 answers.

- A. advances in fishing
- B. land clearing machinery
- C. battery powered cars
- D. paperless communication

Master ID: 2954779 Revision: 2
Correct: CD
Standards:
SOC.6.6 - G2.2.2

Directions: Answer the following question(s).

- 15 The diagram below represents the steps of **The Production Cycle**. The first and last steps are provided. Choose the correct order of the remaining steps in this process.



- A. The pre-forms are heated and shaped into bottles, oil is cleaned at the refinery, then and at a plastics factory the oil is transformed into plastic pellets then bottle pre-forms.
- B. At a plastics factory the oil is transformed into plastic pellets then bottle pre-forms, oil is cleaned at a refinery, then the pre-forms are heated and shaped into bottles.
- C. The pre-forms are heated and shaped into bottles, at a plastics factory the oil is transformed into plastic pellets then bottle pre-forms, then oil is cleaned at the refinery.
- D. Oil is cleaned at the refinery, at a plastics factory the oil is transformed into plastic pellets then bottle pre-forms, and then the pre-forms are heated and shaped into bottles.

Master ID: 1953860 Revision: 4
Correct: D
Standards:
SOC.6.6 - E3.1.2

Directions: Answer the following question(s).

16 Which of the following technologies are harmful to the environment? Choose 2 answers.

- A. advances in fishing
- B. land clearing machinery
- C. battery powered cars
- D. paperless communication

Master ID: 2954646 Revision: 2
Correct: AB
Standards:
SOC.6.6 - G2.2.2

17 How is technology used to remove a mountain top?

- A. computer
- B. chainsaw
- C. explosive
- D. shovel

Master ID: 1953645 Revision: 2
Correct: C
Standards:
SOC.6.6 - G5.1.2

Directions: Answer the following question(s).

18 Explain how nitrates and phosphates effected the Chesapeake Bay region?

Write your answer in the space below.

Master ID: 1953637 Revision: 2

Rubric: 2 Point(s)

2 The response is logical and accurate.

Possible responses may include the effects of build-up of chemicals from sewage treatment deposits into the Bay, resulting in the death of fish and other life forms.

1 The response attempts to explain, but there are some inaccuracies and/or limited information.

0 The response is unclear or blank.

Standards:

SOC.6.6 - G5.1.1

Directions: Answer the following question(s).

- 19 Explain how the consumption of plastic products around the world affects the oceans. Provide at least **two** examples.

Write your answer in the space below.

Master ID: 1953844 Revision: 2

Rubric: 3 Point(s)

3

2 The response provides at least two logical consequences for the consumption of plastic products.

Possible answers may include: Pollution; Garbage Island in the Pacific; Damage to Marine Life

1 The response provides one logical consequence for the consumption of plastic products.

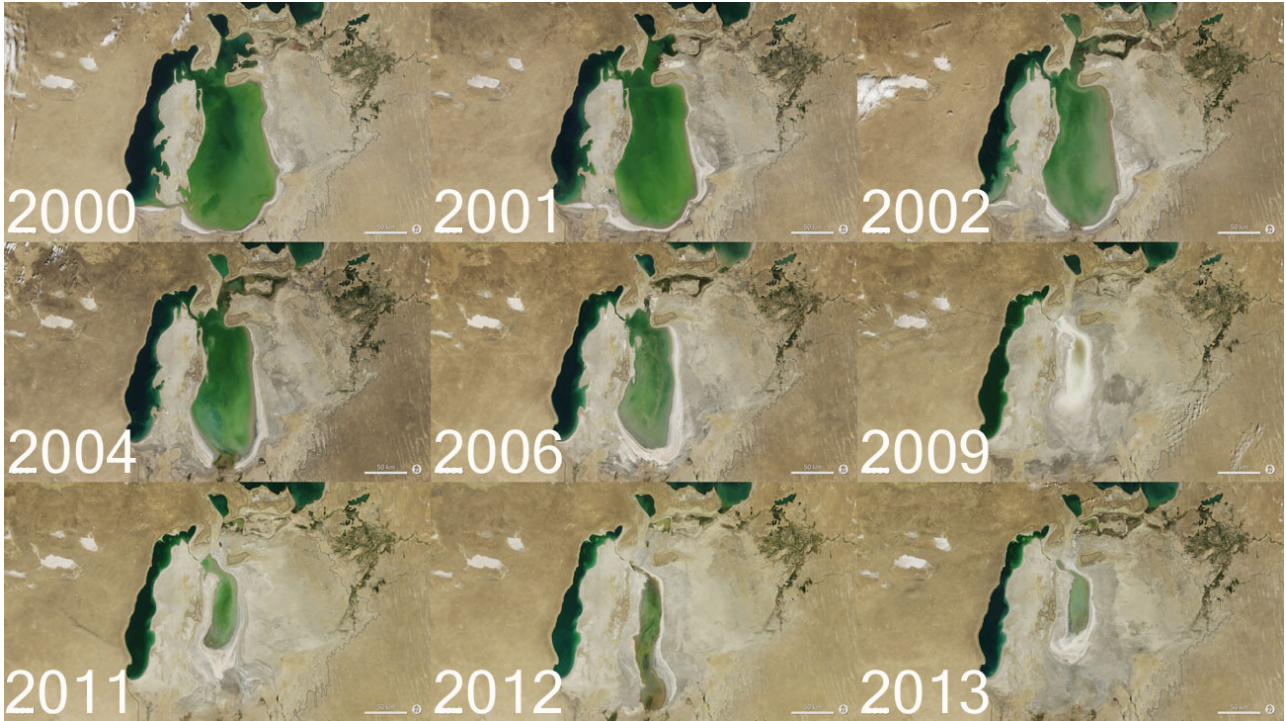
0 The response is unclear, off topic, or blank.

Standards:

SOC.6.6 - G5.1.3

Directions: Answer the following question(s).

20



The drying up of the Aral Sea was caused by drought and the diversion of rivers for irrigation. Describe at least **three** effects that occurred as a result of these events.

Write your answer in the space below.

Directions: Answer the following question(s).

Master ID: 1953614 Revision: 3

Rubric: 3 Point(s)

3 The response includes at least three logical effects of the drying of the Aral Sea.

Possible answers may include:

- collapse of the fishing industry
- community dependent on fishing
- water pollution
- soil damage from salty dust
- health problems from dust on lakebed
- local climate change

2 The response includes two reasonable effects.

1 The response includes one reasonable effect.

0 The response is unclear or blank.

Standards:

SOC.6.6 - G1.2.4

SOC.6.6 - G1.2.5

SOC.6.6 - G1.2.6