

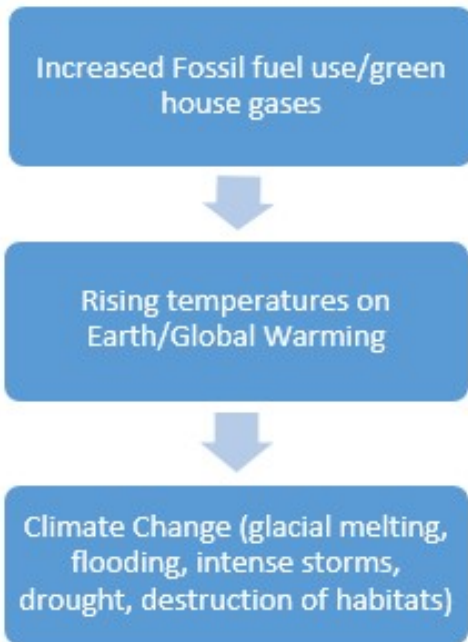
Directions: Answer the following question(s).

- 1 What is an adaptation humans have made as a result of the ozone layer depletion?
- A. The banning of Chlorofluorocarbons (CFC's)
 - B. The creation of Chlorofluorocarbons (CFC's)
 - C. The banning of Chlorine (Cl)
 - D. The creation of Chlorine (Cl)
- 2 Which of the following is a change that nations need to make in order to create more energy?
- A. Countries are dependent on all resources.
 - B. Create renewable resources to be dependent.
 - C. Create non-renewable sources to be interdependent.
 - D. Use renewable energy resources to be interdependent.
- 3 Which of the following statements is **true** of our natural resources and the products humans make from them?
- A. People do not use enough of the world's resources.
 - B. It takes many natural resources to make most products.
 - C. It takes very few resources to make most products.
 - D. People consume less than half of the Earth's materials.
- 4 Which of the following natural resources have been controlled during political conflicts? Select **all three** that are correct.
- A. water sources
 - B. oil
 - C. religion
 - D. minerals

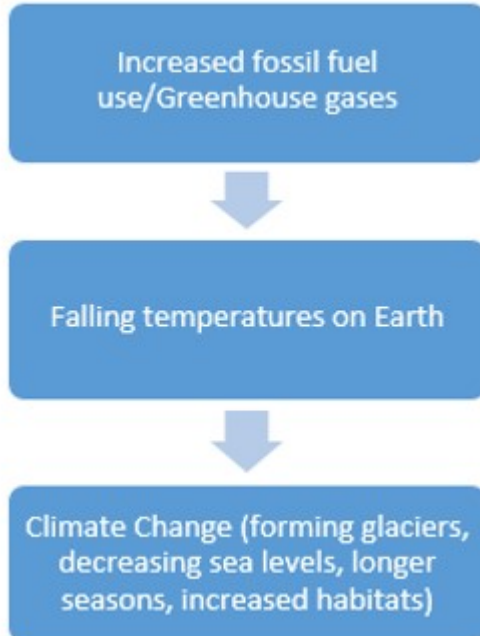
Directions: Answer the following question(s).

- 5 Which of the following flow charts **best** explains the disadvantages of using fossil fuels and Global Warming?

A.



B.



Directions: Answer the following question(s).

6 Which consequence will occur as a result of Global Warming?

- A. depletion of oceans
- B. ozone depletion
- C. depletion of coal
- D. depletion of habitats

7 Which consequence will occur as a result of Over Fishing?

- A. depletion of oceans
- B. ozone depletion
- C. depletion of coal
- D. depletion of habitats

8 Which consequence will occur as a result of Deforestation?

- A. depletion of oceans
- B. ozone depletion
- C. depletion of coal
- D. depletion of habitats

9 Which consequence will result from a Mountain Top Removal?

- A. depletion of oceans
- B. ozone depletion
- C. depletion of coal
- D. depletion of habitats

10 Which of the following is an environmental effect on the atmosphere?

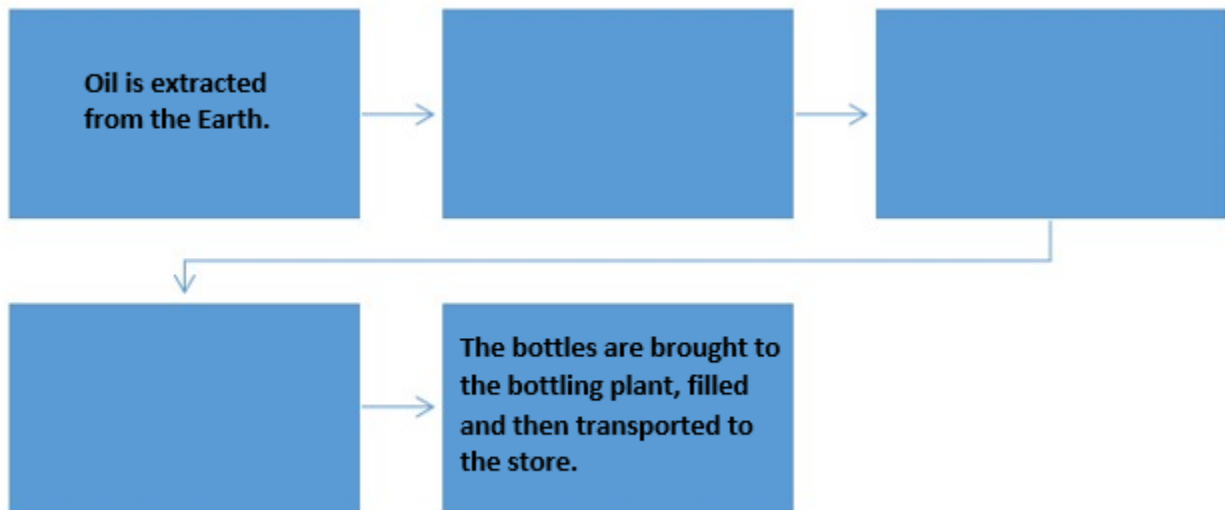
- A. soil erosion
- B. fish dying
- C. ozone depletion
- D. water pollution

Directions: Answer the following question(s).

- 11 Which of the following is the **best** example of countries working together to solve global problems?
- A. World Environment Day
 - B. World Farm Animal Day
 - C. World Day of Remembrance
 - D. World Heritage Day
- 12 What are the environmental factors that lead to conflict among nations?
- A. religion of the nations
 - B. uncooperative leaders
 - C. movement of people
 - D. natural resource availability
- 13 Which of the following **best** describes human environment interaction?
- A. people learning to acquire, analyze, and answer questions
 - B. how people adapt to, use, and modify the environment
 - C. how people move, locate, and settle
 - D. learning to adapt, locate, and answer
- 14 Which of the following technologies are helpful to the environment? Choose 2 answers.
- A. advances in fishing
 - B. land clearing machinery
 - C. battery powered cars
 - D. paperless communication

Directions: Answer the following question(s).

- 15 The diagram below represents the steps of **The Production Cycle**. The first and last steps are provided. Choose the correct order of the remaining steps in this process.



- A. The pre-forms are heated and shaped into bottles, oil is cleaned at the refinery, then and at a plastics factory the oil is transformed into plastic pellets then bottle pre-forms.
- B. At a plastics factory the oil is transformed into plastic pellets then bottle pre-forms, oil is cleaned at a refinery, then the pre-forms are heated and shaped into bottles.
- C. The pre-forms are heated and shaped into bottles, at a plastics factory the oil is transformed into plastic pellets then bottle pre-forms, then oil is cleaned at the refinery.
- D. Oil is cleaned at the refinery, at a plastics factory the oil is transformed into plastic pellets then bottle pre-forms, and then the pre-forms are heated and shaped into bottles.

- 16 Which of the following technologies are harmful to the environment? Choose 2 answers.

- A. advances in fishing
- B. land clearing machinery
- C. battery powered cars
- D. paperless communication

Directions: Answer the following question(s).

17 How is technology used to remove a mountain top?

- A. computer
- B. chainsaw
- C. explosive
- D. shovel

18 Explain how nitrates and phosphates effected the Chesapeake Bay region?

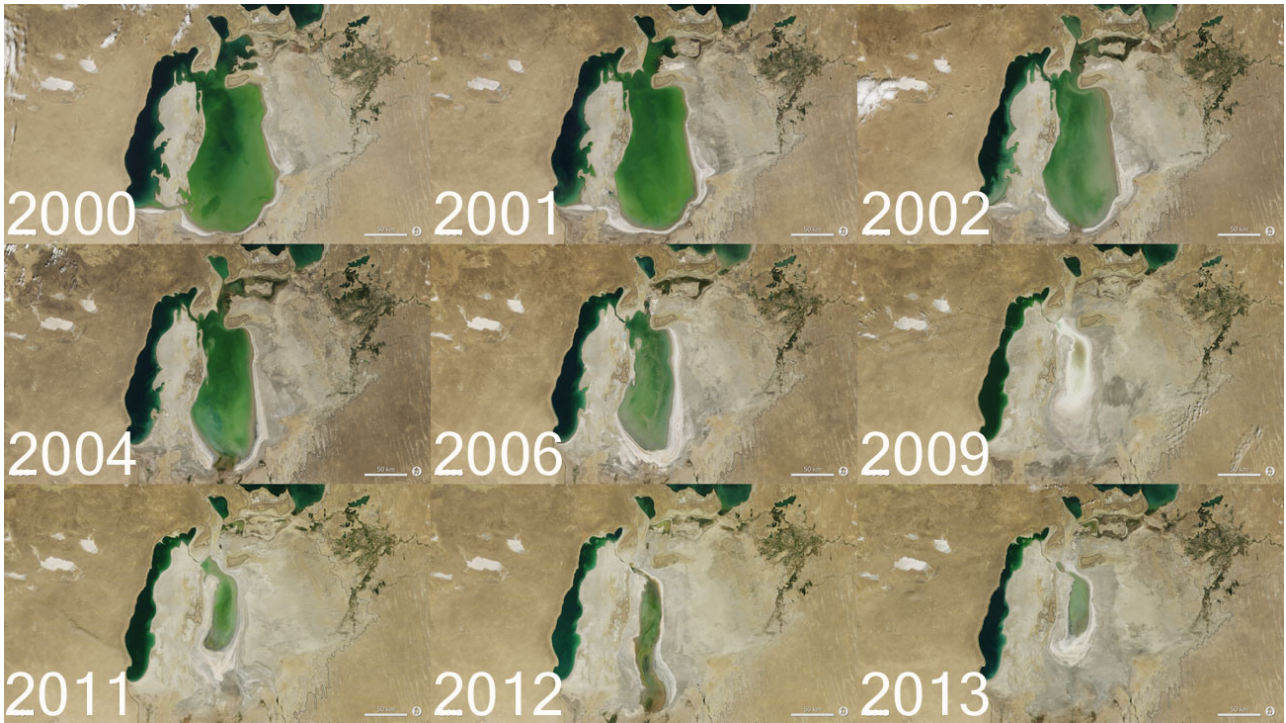
Write your answer in the space below.

19 Explain how the consumption of plastic products around the world affects the oceans. Provide at least **two** examples.

Write your answer in the space below.

Directions: Answer the following question(s).

20



The drying up of the Aral Sea was caused by drought and the diversion of rivers for irrigation. Describe at least **three** effects that occurred as a result of these events.

Write your answer in the space below.