

Directions: Read the passage below and answer the question(s) that follow.

Section

Michigan Cardinal Directions

Use the map below to answer the questions that follow.



1 In which direction would you be headed if traveling from Grand Rapids to Traverse City?

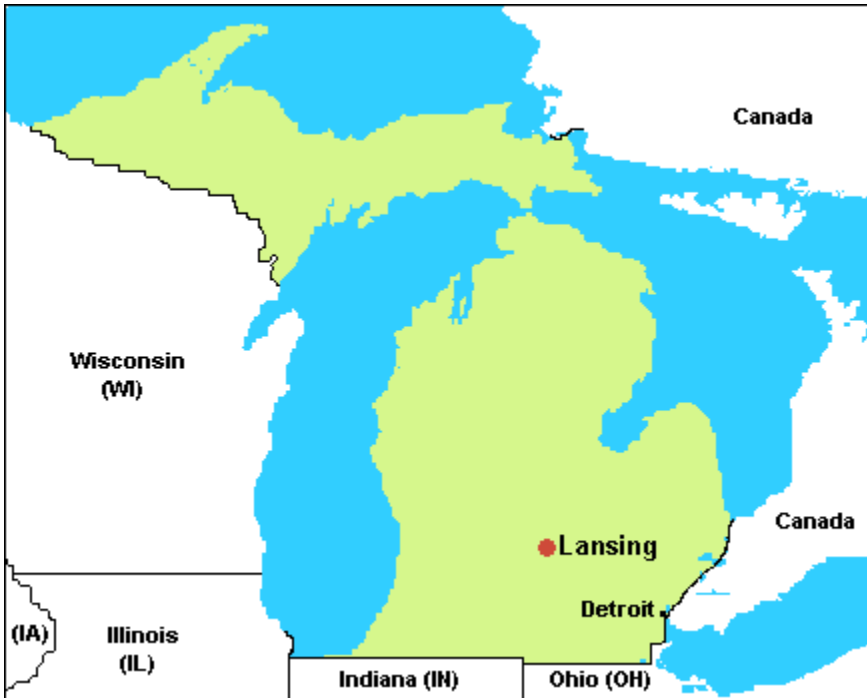
- A. East
- B. North
- C. South

2 In which direction would you be headed if traveling from Canada to Michigan?

- A. East
- B. North
- C. South

Directions: Answer the following question(s).

- 3 What lake is nearest to the Upper Peninsula on the map above?



- A. Lake Ontario
- B. the Great Salt Lake
- C. Lake Superior

- 4 Which Great Lake is **not** touching Michigan?

- A. Lake Huron
- B. Lake Superior
- C. Lake Ontario

Directions: Answer the following question(s).

- 5 Which of the following is a **human characteristic** shown on the thematic map below?



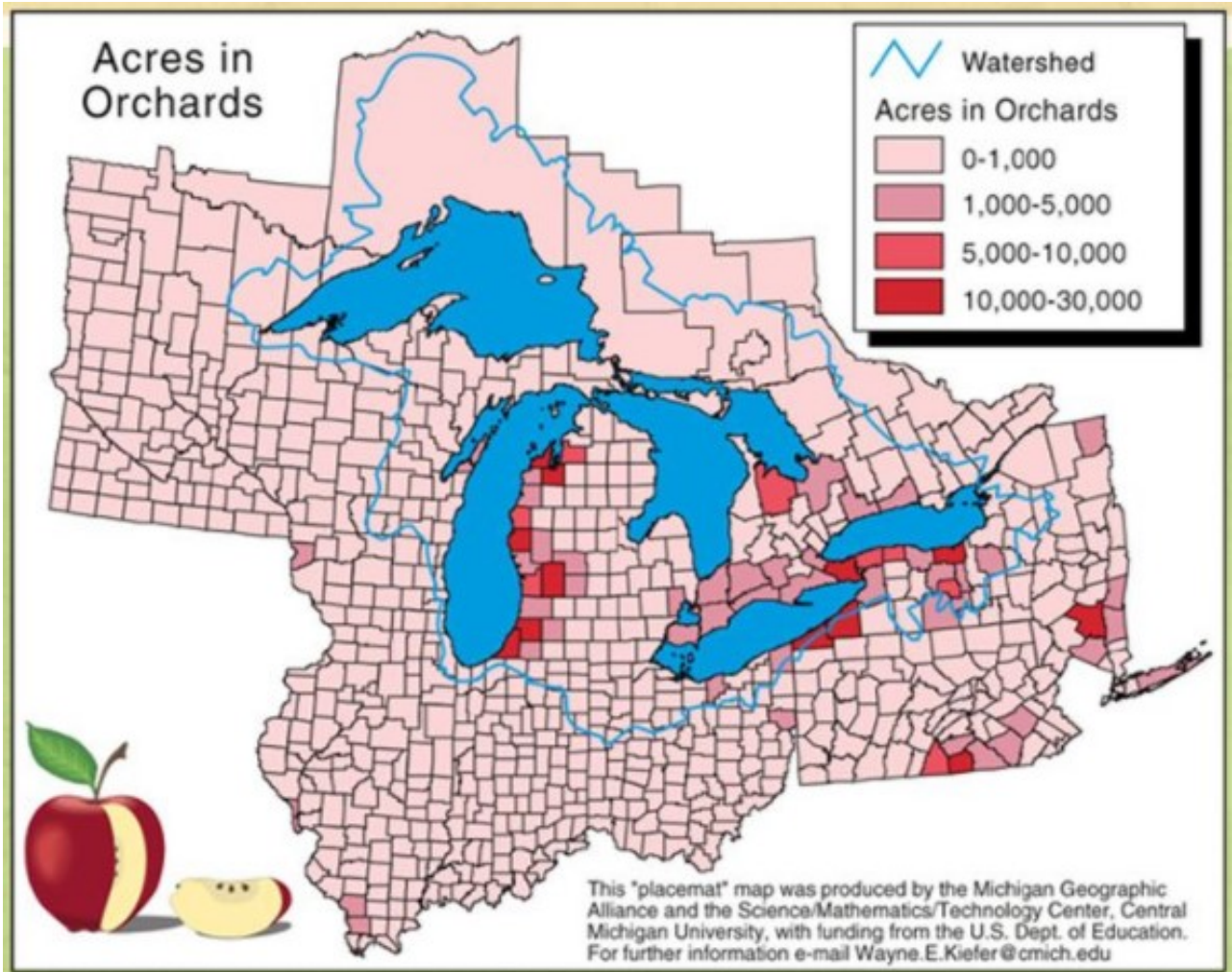
- A. The formation of the Great Lakes
- B. The forests in the Upper Peninsula
- C. A highway system of transportation

- 6 Which of the following is the most likely reason why many of Michigan's citizens live in the southeastern part of the state?

- A. there are more opportunities for jobs
- B. Canada is closer to this area
- C. there are too many people living in the north

Directions: Answer the following question(s).

- 7 The map below shows acres of orchards in and around the state of Michigan. What do you notice about the location of most of the orchards in Michigan? Identify and explain how characteristics of Michigan might be contributing to the location of these orchards.

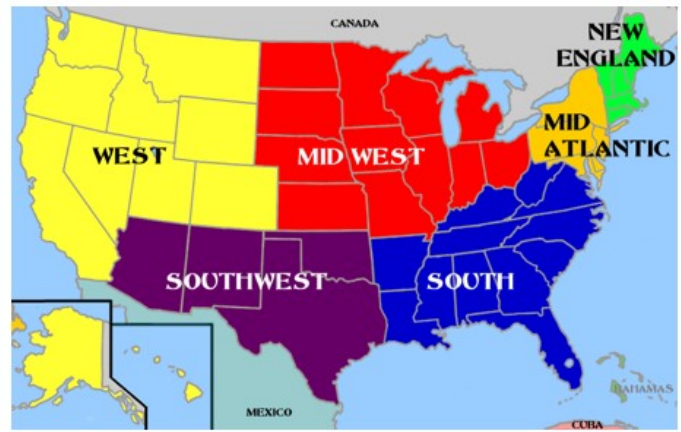


Write your answer in the space below.

Directions: Answer the following question(s).

- 8 Which city is a part of Wayne County?
- A. Traverse City
 - B. Detroit
 - C. Lansing
- 9 Sam lives in Wayne County. Wayne County is in Michigan. What is also true?
- A. He lives in the state of Ohio.
 - B. He lives in the city of Lansing.
 - C. He lives in the United States of America.

- 10 Use the maps provided to describe two regions to which Michigan belongs. Identify the two regions and explain your reasoning about why Michigan is part of these regions.



Write your answer in the space below.

- 11 Which of the following is a likely consequence of dumping trash into the Great Lakes?
- A. The air around the water will become polluted.
 - B. The polluted water will kill living things.
 - C. The trash will erode surrounding land.

Directions: Answer the following question(s).

- 12 Which activity is an example of someone using natural resources?
- A. visiting a library
 - B. riding a bike
 - C. going hunting or fishing

13



The picture shows two of Michigan's natural resources. Give one positive and one negative consequence of using each resource.

Write your answer in the space below.

- 14 Which of the following is a reason why someone might leave the state of Michigan? Check ALL that are correct.
- A. to seek employment in another state
 - B. to live in a state that is warm all year
 - C. to live in a state that is near a lake
 - D. to live closer to an ocean

Directions: Answer the following question(s).

15 There are many reasons why some people choose to live in Michigan and why some people choose to leave Michigan to live elsewhere.

- Describe one positive result of people **moving to** the state of Michigan.
- Describe one negative consequence of people **moving out** of the state of Michigan.

Write your answer in the space below.